



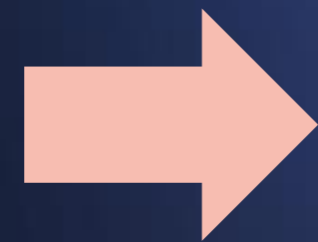
Transformative
Biotech

PCR testing for infectious diseases @ANYWHERE™

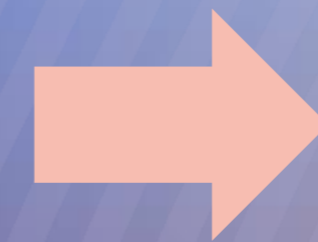
Kevin Kraus
CEO

THE PROBLEM

**People
lack
access**



**Delayed
or missed
diagnosis**



**14M
deaths**

affordable,
accurate,
rapid testing

annually from
infectious
diseases

UNMET NEED

Pandemic scaled testing, not PCR-level confidence

Fast, Cheap ←

→ Accurate, Sensitive

Antigen

Respiratory infections



Molecular (NAAT)

Primarily respiratory



PCR

All infectious diseases



Note: PCR (Polymerase Chain Reaction) is a highly accurate molecular diagnostic technique that is fundamental to all analysis of DNA/RNA. NAAT = nucleic acid amplification test.

PCR testing hasn't reached its full potential

Toxic inhibitors in sample collection



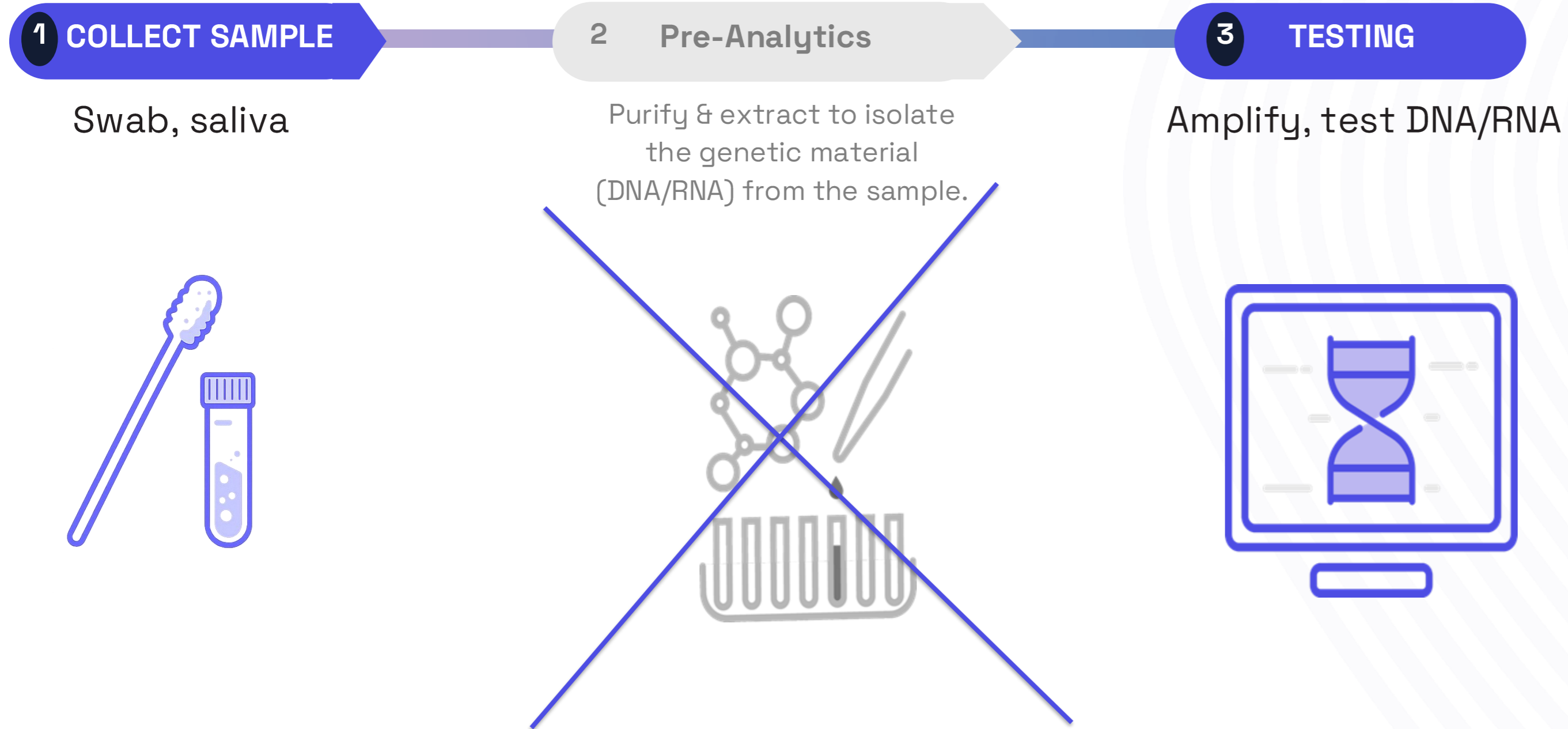
Workflow and pre-analytic steps



Costly equipment, reagents and skilled technicians



Direct-to-PCR testing technologies



Compared to conventional PCR

5-10x faster

Lower cost

Highly accurate
no toxic chemicals

Reduce PCR instrument complexity and costs



Compared to conventional PCR

Simpler hardware design / workflow

Eliminates toxic reagents

~33% lower system cost

Clinically proven extraction-free PCR

590,000+
patients tested

100%
concordance
(swab)

IP protected
1 issued US patent
+ 5 pending

*Data generated from 2020-2023 under CLIA certification (#06D2213521) using extraction-free direct-to-PCR workflow. Issued US patent #12,344,889 (July 2025)

PCR for infectious disease testing @ANYWHERE™

PROVEN "DIRECT-TO-PCR"



ADVANCED MICROFLUIDICS



NEXT GENERATION PCR



1 COLLECT SAMPLE

Swab, saliva

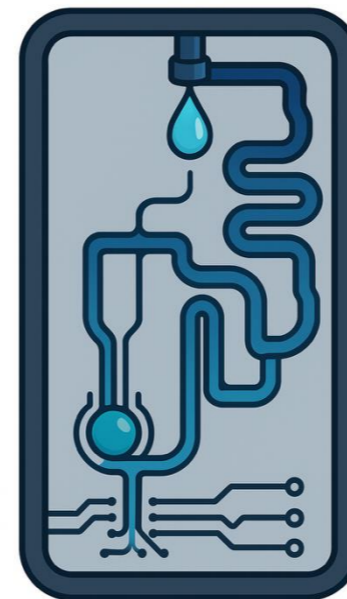


2 TESTING

Visualize results



Lab-on-a-chip heating technologies



Handheld testing device



MARKET SEGMENTATION

\$20B+ Total Available Market (TAM)



RESEARCH MEDIA
(Non-Clinical)



SAMPLE COLLECTION
MEDIA (Clinical)



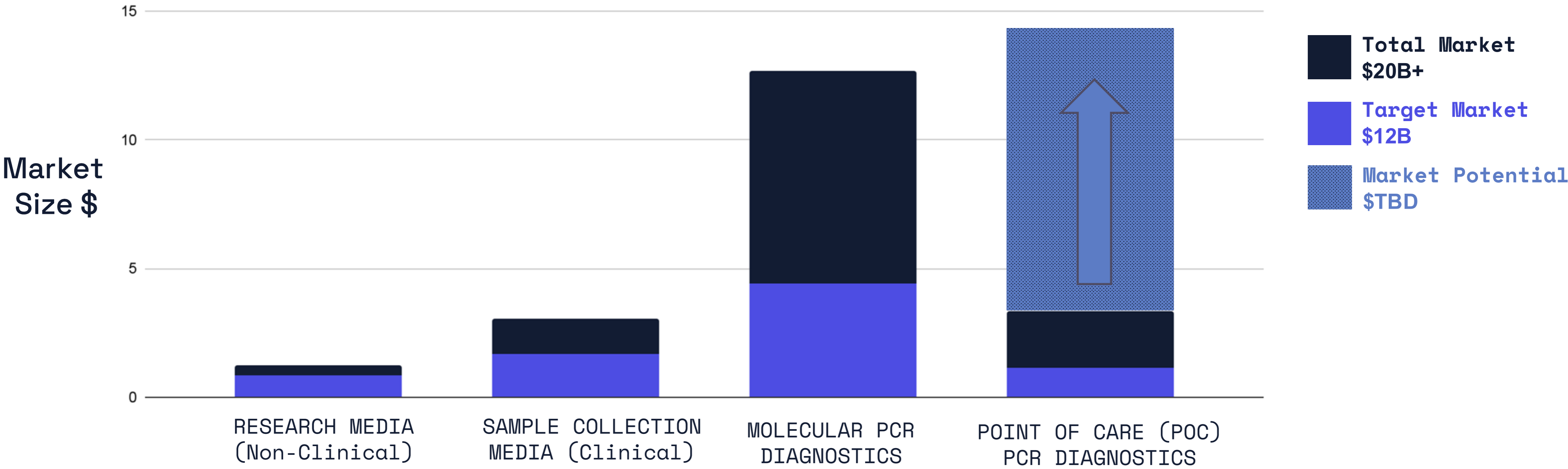
MOLECULAR PCR
DIAGNOSTICS



POINT OF CARE (POC)
PCR DIAGNOSTICS

THE OPPORTUNITY

\$12B TARGET MARKET



GO-TO-MARKET & LICENSING ROADMAP

2026

2027

2028

2029

2030

Product
Examples

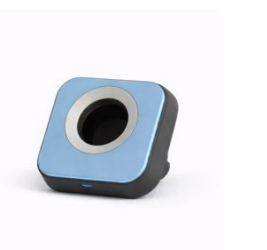
MOLECULAR DIAGNOSTIC SALES
(Licensing & Proprietary @ANYWHERE™)



CLINICAL LAB SALES
(Direct Amp™ IVD** reagents, sample collection kit)



POINT-OF-CARE SALES
(Licensing of IP of @ANYWHERE™ device)

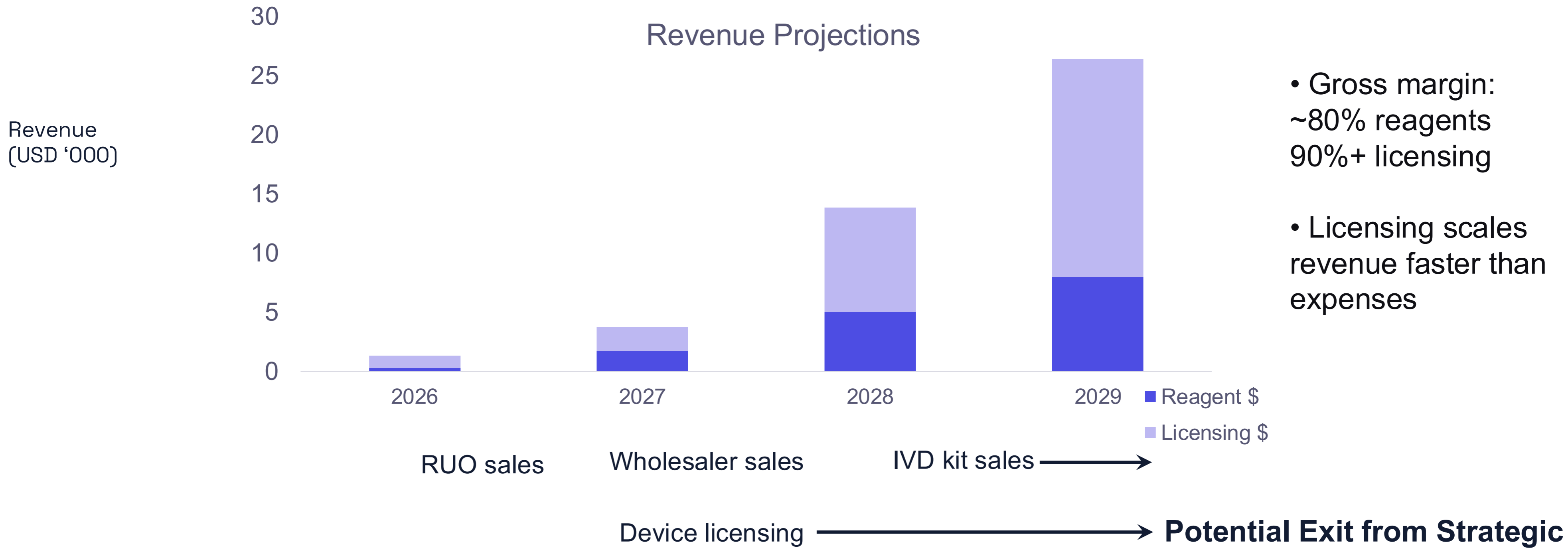


NON-CLINICAL SALES (Direct Amp™ RUO* extraction-free reagents for use on open PCR systems)



*RUO = Research Use Only. **IVD = In Vitro Diagnostic.

Profitable growth from reagents and licensing deals



\$6M

First tranche of \$2.75M

Q2 2026

Milestones

- ✓ Expanded clinical validation data
- ✓ 510(k) submission of Direct Amp™ sample collection kit
- ✓ Additional patent claims and portfolio expansion
- ✓ @ANYWHERE™ handheld PCR proof of concept
- ✓ First customer, licensing, and OEM revenue
- ✓ Key hires and advisors to strengthen execution

THE CORE TEAM

EXPERIENCED IN DIAGNOSTICS & PRODUCT LAUNCH



KEVIN KRAUS
CEO



MARK KELLEHER, PHD
EVP, Research & Development



JAY FOUST
EVP, Business Development & Licensing



SHELLE POURMANAFZADEH ARDABILI
VP, Business Operations



BOB BLOMQUIST
Co-Inventor, Board Chair



BARBARA HANDELIN, PHD
Board Member



RUSS HULLET
Co-Founder, Board Member



ADVISORS & COLLABORATORS

EXPERTISE IN DIAGNOSTICS & PRODUCT DEVELOPMENT



CHARLES HENRY, PHD
Professor, Chemical & Biological Engineering; Chemistry, Advisor

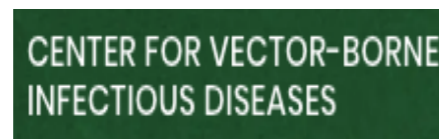
BRIAN GEISS, PHD
Professor, Microbiology, Immunology & Pathology, Advisor

DAVID DANDY, PHD
Professor, Chemical & Biological Engineering, Advisor

XIAOYUN DING, PHD
Associate Professor, Mechanical Engineering, Co-Inventor @ANYWHERE™

MICKEY URDEA, PHD
Diagnostics Advisor & Technology Pioneer

DUSH RAMACHANDRAN
Strategic & Information Technology Advisor



Affordable, accurate and rapid PCR testing for infectious diseases

TEAM & ADVISORS



Proven in diagnostics

IP

- ✓ Landmark US patent
- 5 patents pending

EVIDENCE & POTENTIAL

- ✓ 590,000+ clinical tests
- ✓ Licensing interest with clear monetization path

ASK

\$6M

IMPACT

- Sustainable growth and multiple exit pathways
- ~4M fewer deaths globally from infectious diseases

FUTURE

@ANYWHERE™ PCR





Transformative
Biotech

THANK YOU

GET IN TOUCH!

Kevin Kraus, CEO

+1 (720) 329-3455

kevin@transformative-bio.com

Boulder, CO 80304

transformative-bio.com

Connect on [LinkedIn](#):



Extraction-free PCR: proven equivalent to conventional PCR

Summit Biolabs tests	DISEASE	SAMPLE TYPE	POSITIVE PERCENT AGREEMENT	NEGATIVE PERCENT AGREEMENT
CLINICAL STUDY				
COVIDFast	COVID-19	swab	100%	100%
COVIDFast	COVID-19	saliva	98.8%	99.4%
PROOF OF CONCEPT STUDY				
FLUVIDFast	COVID-19	swab	92.9%	99.2%
	COVID-19	saliva	92.0%	99.6%
	Flu	swab or saliva	100%	—

EXIT HISTORY: POINT-OF-CARE DIAGNOSTICS

Large strategics acquire POC platforms that reduce complexity, time-to-result, or cost

Company	Lex Dx	Curiosity	Iquum	Lumera Dx	Mesa	BioFire	Alere
(Exit Value)	(\$100M)	(\$175M)	(\$275M)	(\$420M)	(\$450M+)	(\$450M)	(\$6B)
Revenue	Early Revenue	Early Revenue	\$25M (LIAT)	\$40M	\$50M	\$110M	\$2.5B
Acquiror							
Year	2026 (pending)	2022	2014	2024	2021	2014	2017